

The SWEET SPOT



Is there any place that drinks more poetically than the South? We think not. But if you immediately envision a Mint Julep, prepare to be amazed at The Sweet Spot, a bar rooted in Southern tradition but offering a tangible, imaginative taste of The New South.

Ours is a chef-driven bar, inspired by the kitchen and the menu and the idea that Tupelo's spirits should be as flavorful as its food. To accomplish this, we use our own fresh purees, our own house-made infusions, our own creative all-natural garnishes. Our cocktails and elixirs are made from scratch, just like our cuisine – fresh, fun and full flavored.

We're happy to make you a Mint Julep, if that's what you crave. But we encourage you to try one of our liberating libations, created from scratch on the blank canvas of a bar glass.

Cocktails elevated to an art form? Yes. Pure poetry in a glass? *You bet your swizzle stick.*

MARTINIS

Carolina Cosmo » Lemongrass-infused moonshine, Cointreau, and cranberry juice: 9

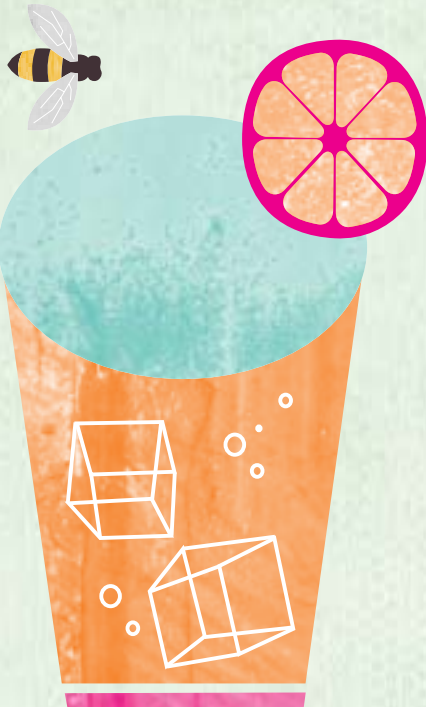
Peachy Keen » T&S moonshine and all-natural peach syrup topped with Prosecco: 8

Blackberry-Pomegranate Fizz » Blackberry-infused moonshine, all-natural pomegranate syrup, and fresh squeezed lemons topped with Prosecco: 8

Berry Bubbly » Blackberry-infused moonshine, all-natural raspberry syrup, and cranberry and orange juices topped with Prosecco: 8

Blackberry Lemon Drop
» Lemongrass-infused moonshine, all-natural blackberry syrup and house-made sour mix: 7

Mango-Apple Tini » Apple-infused moonshine, all-natural mango syrup and pineapple juice with a touch of fizz: 8



COCKTAILS

Moonswine Mary™ » Jalapeno and bacon-infused moonshine and Whiskey Willies Bloody Mary Mix: 9

New South Julep » Blackberry-infused moonshine, all-natural peach and blackberry syrups with fresh muddled mint: 8

Lohito » Lemongrass-infused moonshine, tupelo honey, fresh lemon, and muddled mint topped with soda water: 8

Tupelo Tea (2 Choices): 8

Choice 1:

Lemongrass-Ginger »

Lemongrass-infused moonshine, all-natural peach syrup, and scratch-made ginger syrup, topped with fresh brewed iced tea

Choice 2:

Blackberry-Mint » Blackberry-infused moonshine, all natural blackberry syrup, fresh lemon, and muddled mint, topped with fresh brewed iced tea

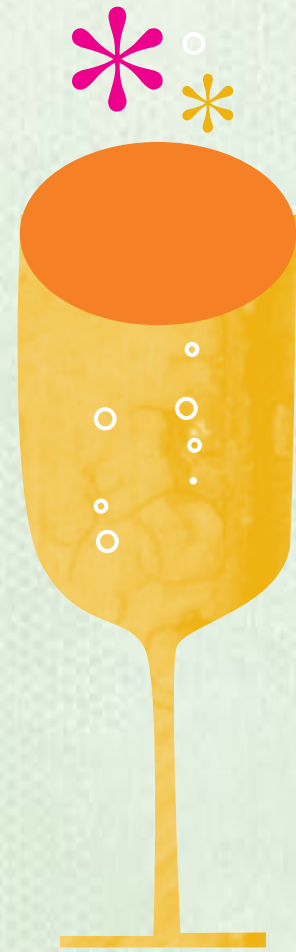
Strawberry-Basil Lemonade » Strawberry and basil-infused moonshine and house-made sour mix with fresh lemons: 8

Blackberry Margarita » Blackberry-infused moonshine, all-natural blackberry syrup & scratch-made margarita mix: 7

Pomegranate-Apple Margarita » Apple-infused moonshine, all-natural pomegranate syrup and scratch-made margarita mix: 7

Georgia Peach » T&S moonshine, Amaretto Disaronno, all-natural peach syrup and house-made sour mix: 9

Shiny Apple Sour » Apple-infused moonshine and house-made sour mix with a little added fizz: 7



ALL AGES LIBATIONS

Flavored Teas » Blackberry, raspberry, peach, mango, and pomegranate: 2.50

Flavored Lemonades » Scratch-made sour mix and fresh lemons with your choice of blackberry, raspberry, peach, mango, and pomegranate: 2.50

Root Beer Float: 4.50

Southern Soda » All natural peach syrup, fresh mint, and peaches topped with soda water: 2.50

NO-hito » House infused ginger syrup, fresh limes and muddled mint topped with gingerale: 2.50

Pomegranate Mango Punch » All natural pomegranate and mango syrups mixed with pineapple juice and made to fizz: 2.50

All Tupelo Honey Cafe hand-crafted specialty cocktails are created with our own proprietary recipes using house-infused Troy & Sons Moonshine. Made from non-genetically modified, heirloom American Crooked Creek Corn® grown near Asheville, NC, Troy & Sons Moonshine is pure, small-batch white whiskey. We think it is the perfect palette for infusing fantastic flavors and concocting amazing cocktails. Please enjoy responsibly!

WHITES

Cadonini Pinot Grigio, Italy » Displays bright and abundant flavors of pear and apple with a crisp finish 7/glass, 27/bottle

Biltmore Riesling, North Carolina » Scents of flowers, spice and tropical fruit; beautifully tart and refreshing 6/glass, 23/bottle

Domaine de Ballade, France (Sustainable Organic) » A fresh and lively dry white wine with an incredible balance between minerality and acidity 7/glass, 27/bottle

Spy Valley Sauvignon Blanc, New Zealand » Hints of citrus with a refreshing crisp finish 9/glass, 35/bottle

Pine Ridge Chenin Blanc-Viognier Blend, Napa Valley (Sustainable Organic) » A bright aromatic nose leads into bursting flavors of juicy ripe melons with a refreshing clean finish 8/glass, 31/bottle

Lange Estate Pinot Gris, Oregon » Fragrant aromas of orange blossoms with hints of lemon and honey with a creamy smooth finish 9/glass, 35/bottle

Writer's Block Rousanne, Lake County » A beautiful blend of pear and herbs with a strong floral nose and spicy rich finish 11/glass, 42/bottle

Two Oceans Chardonnay, South Africa » Abundance of citrus supported by subtle vanilla flavors, lightly oaked with a long finish 7/glass, 27/bottle

Cuvée Stephi Chardonnay, France » A traditional French Chardonnay, silky in the mouth with tangy apple and juicy pear flavors 8/glass, 31/bottle

Gundlach Bundschu Chardonnay, Sonoma Valley » A rich, oaky and velvety texture; aromas of mandarin orange, lemon and butterscotch 11/glass, 42/bottle

BUBBLES 7/glass

Tupelo Royale » Champagne, raspberry Monin, with frozen raspberries

Tupelo Bellini » Champagne, peach Monin, with frozen peach bits

Tupelo Mega-Mosa » Champagne with fresh squeezed OJ

Southern Champagne » Champagne with a splash of Southern Comfort and a dash of bitters

Montelliana Prosecco di Valdobbiadene Extra Dry, Italy » Soft and smooth, with floral and citrus notes 7/glass, 27/bottle

REDS

Gundlach Bundschu Pinot Noir, 2008, Sonoma Valley » Black cherry, dried rose petal and spice; supple dark fruit and minerality 11/glass, 42/bottle

Bodegas Alta Callia Mablec, 2010, Argentina » Enticing aromas of plums and cherries with a hint of spice in the finish 7/glass, 27/bottle

Gundlach Bundschu Mountain Cuvée, 2008, Sonoma Valley » 71% Merlot, 21% Cabernet, 5% Syrah, and 3% Cabernet Franc blend. Rich, with plum, black cherry, raspberry, and cocoa; meaty, spicy finish 11/glass, 42/bottle

REDS, a blend of 60% Old Vine Zinfandel, 30% Carignane and 10% Petite Syrah, Lodi » The fruity exuberance of this blend is enhanced by the spice of the Carignane grape, while the Petite Syrah adds texture and depth to a beautiful finish 8/glass, 31/bottle

Pennywise Merlot, 2009, Napa Valley » A vibrant jammy nose filled with an abundance of red fruit on the tongue and a hint of pepper in the finish 9/glass, 35/bottle

Beso De Vino, "Kiss of Wine" 100% Syrah, 2009, Spain » Aromas of wild fruits, black olives and spices. Full bodied and well balanced, with notes of cocoa, spice and fruits 7/glass, 27/bottle

Line 39 Cabernet Sauvignon, 2010, Lake County » Bright red fruit with a hint of blackberries and a smoky finish 6.5/glass, 25/bottle

Bodega Gratia Cabernet Sauvignon, 2009, Argentina (Sustainable Organic) » A delicious nose filled with spicy oak and hints of earth followed by a palate full of ripe black cherries, blueberries, and spice 11/glass, 42/bottle

Peter Lehman Layers, 2009, Australia » Distinct spice and tobacco accents add to the supple core of red berry and cherry flavors, lingering easily on a generous finish 9/glass, 35/bottle

Perrin & Fils Cotes du Ventoux (coat-dew-von-too) Rouge, 2010, France » Flavors of dark fruit, blackberries, dark cherries, black currant and blueberries, fresh herbs and black pepper fill this easy drinking wine. A private wine from our good friend Michel of Bouchon French Comfort Food. For French comfort food done right, give them a try and enjoy their wine...we do! Bon Soire, Ya'll 6/glass, 23/bottle

LOCAL DRAFTS

3.95 each

French Broad Gateway Kölsch »

Faithful to the great German ales found in Köln, this golden, clean and crisp thirst quencher has a sweet finish. Light enough to drink all year long! 5.3% ABV

Pisgah Pale Ale (Organic) »

A bright and citrusy pale that combines rich organic malts with whole leaf Chinook and Mount Hood hops. 5.6% ABV

Highland Seasonal »

Asheville's oldest operating brewery, we choose the perfect Highland Brew to complement the season!

Green Man IPA » English and Canadian malts and ferocious five-time hopping with Target and Kent Goldings hops make this orange-amber ale strong in both flavor and alcohol! 6.0% ABV

Green Man Seasonal »

One of Asheville's finest breweries and a dear friend to Tupelo Honey, we are proud to support Green Man's seasonal offerings and hope that you enjoy!

French Broad Wee-Heavy-Er Scotch Ale » A malty, toasty, and sweet traditional Scotch Lowland ale that is one of Asheville's most popular brews. 7% ABV

BEER FLIGHTS

(5 oz. pours) 6.00

Customized to Your Palate »

Choose any four of our local favorites for your own personal tour of Asheville's finest breweries

BOTTLED CRAFTS

Sam Adams Light »

12oz: 3.50

Stella Artois »

22oz: 6.00

Pork Slap Pale Ale »

12oz can: 2.50

Pabst Blue Ribbon »

16oz can: 2.50

Clausthaler N/A »

12oz: 3.00

